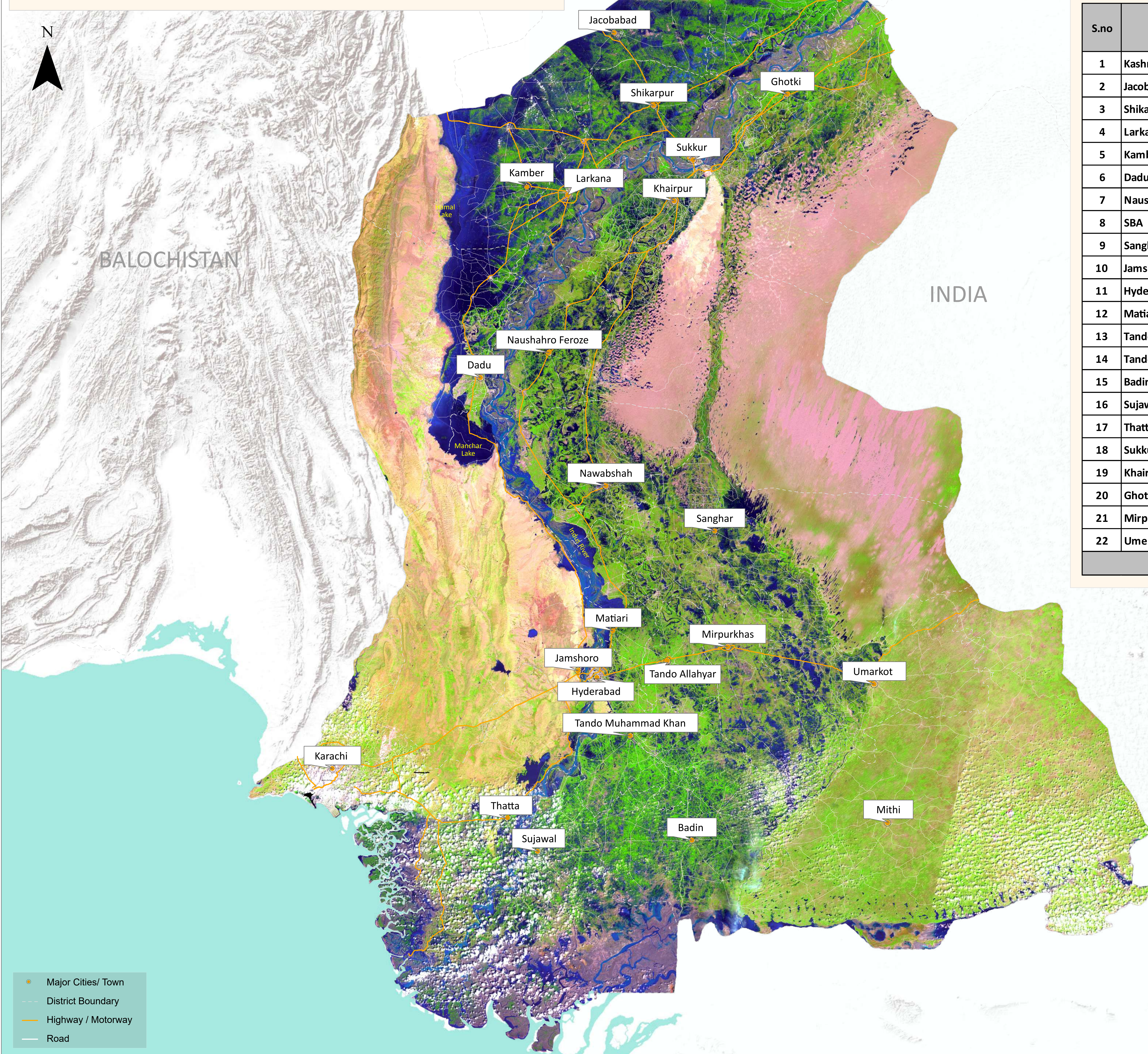


Flood Inundation in Sindh Province

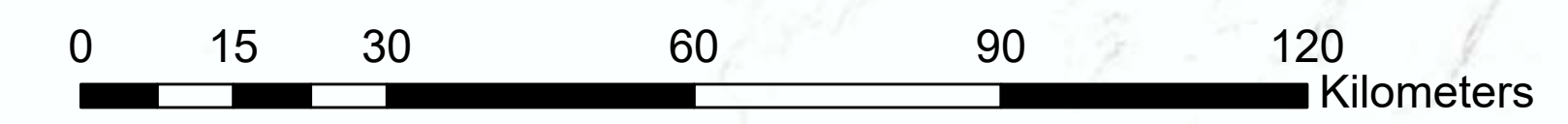


S.no	District	Total Area in Sq.Km	Previous Inundation in Sq.Km (14/9/2022)	Current Inundation in Sq.Km (23/9/2022)
1	Kashmore	2,549.03	715.87	473.49
2	Jacobabad	2,769.36	1,371.96	1,014.74
3	Shikarpur	2,576.89	1,091.81	699.27
4	Larkana	1,906.34	1,002.08	526.41
5	Kamber Shahdadkot	5,596.44	2,733.49	2,180.60
6	Dadu	8,032	1,979.26	1,678.92
7	Naushahro Feroze	3,025.48	1,005.99	619.28
8	SBA	4,615.16	1,015.69	848.99
9	Sanghar	10,259.02	780.13	950.09
10	Jamshoro	11,250.32	918.73	875.95
11	Hyderabad	1,021.54	143.89	126.34
12	Matiari	1,458.04	430.09	404.87
13	Tando Allah Yar	1,572.86	107.99	148.59
14	Tando Muhammad Khan	1,813	128.2	127
15	Badin	6,470	688.09	609
16	Sujawal	8,699.20	1,825.02	2,014.59
17	Thatta	7,704	1,749.07	1,172.97
18	Sukkur	5,212.05	768.06	363.11
19	Khairpur	15,925.04	1,195	826.64
20	Ghotki	6,506.18	395.34	288.54
21	Mirpurkhas	3,319.16	157	453.96
22	Umerkot	5,502.92	768.06	409.58
Total		117,784.49	20,970.82	16,812.93

Disclaimer: 15m resolution satellite Images has been used for preliminary damage assessment and depicts status of flood inundation as of image acquisition date.

Source: Landsat 8 Collection 2, 23 September 5: 45 GMT

- Major Cities/ Town
- District Boundary
- Highway / Motorway
- Road



Source: Esri, USGS, NOAA